

5 Reasons Why Engineers are Switching to PlantSight over Navisworks

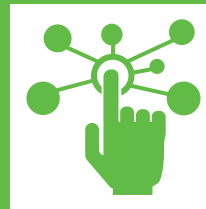




PlantSight: The Digital Twin for the Process Industry

PlantSight is a set of cloud-based and open services that help you visualize data, documents, and models over the asset lifecycle to validate information, ensure compliance, gain insights, and make fast and accurate decisions.

PlantSight brings all your plant data and information together to provide:



CONTEXT



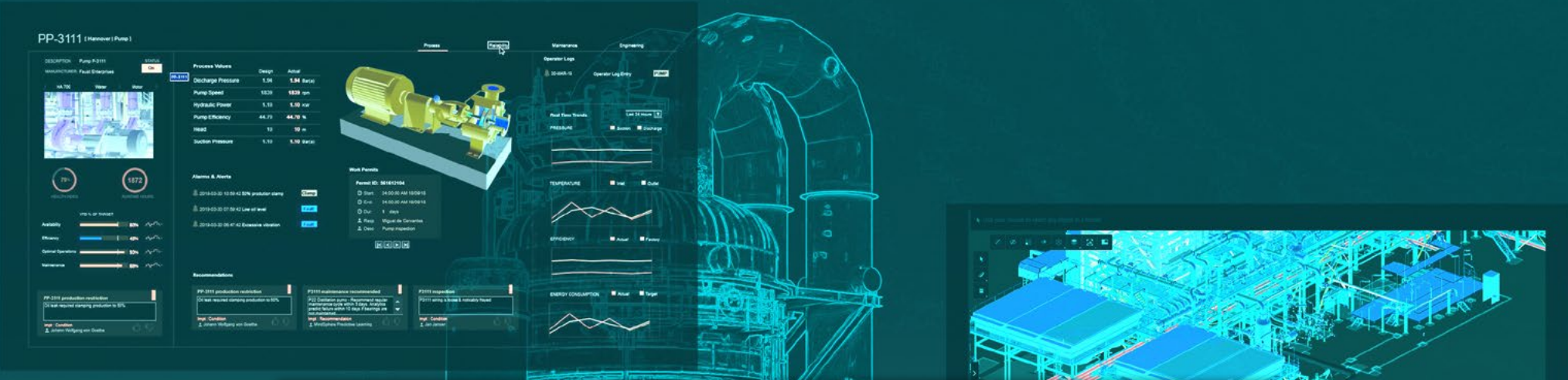
VALIDATION



VISUALIZATION

...transforming raw data into a complete, evergreen digital twin.





Here Are Five Reasons to Switch

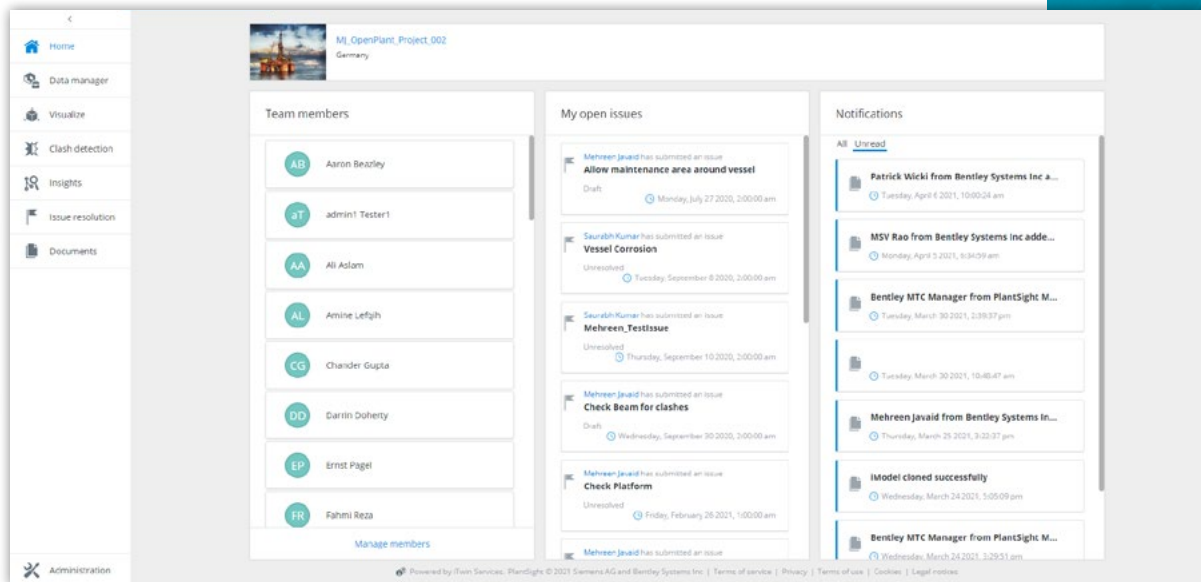


REASON
1

PlantSight Has Better Design Review Workflows

With Navisworks, you need someone with technical training to be the keeper of the design review process, and they must use a desktop application.

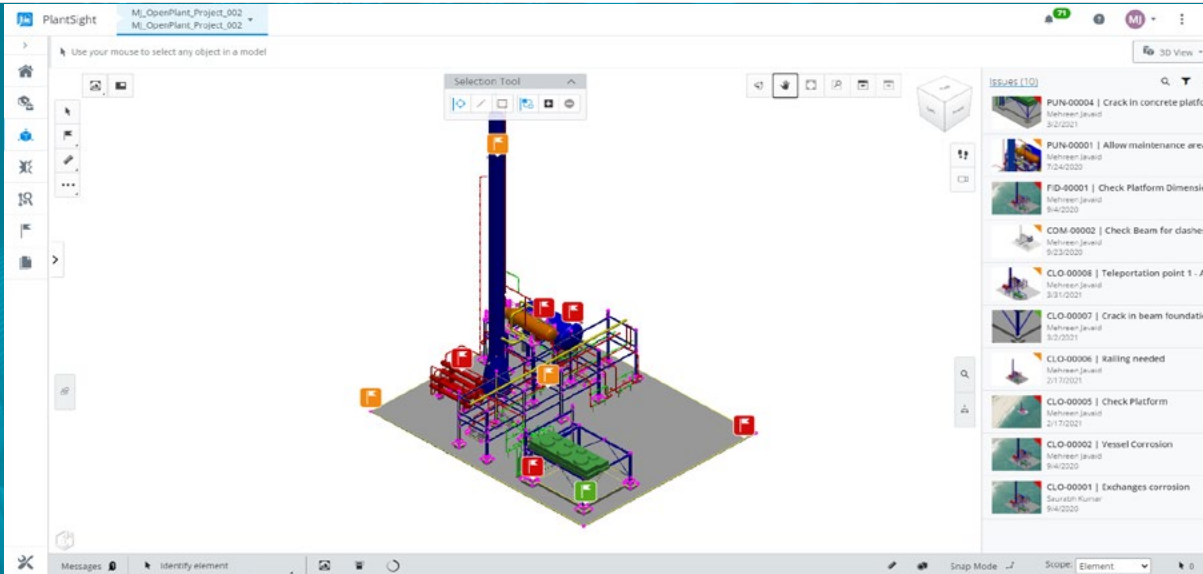
- To succeed, design teams need to work in an environment where they can easily share data and collaborate.
- PlantSight is a cloud solution that allows all users, no matter the skill set, to review engineering data without installing any software on their machines.
- Stakeholders rely on current data and transparency to make effective decisions.



REASON
2

Issues Resolution

Navisworks and similar tools do not offer a comprehensive issue management solution.



- Clients confirm they must record issues with the Navisworks design file in a separate Excel file.
- PlantSight offers comprehensive issue management and tracking to digitize, standardize, and accelerate the lifecycle of your reporting.
- You can create, manage, and track issues within PlantSight in the context of your design.



REASON
3

Timeline of Design Changes

Design changes are inevitable in any brownfield or greenfield project.

- Using only traditional file-based solutions, it is not possible to track changes and revisions over time.
- PlantSight provides a reliable record of what happened, when, and by whom, establishing a reliable timeline.
- You can visualize 1D, 2D, and 3D engineering data at any given point in time with a complete audit trail.

The screenshot displays the PlantSight software interface. The main window shows a 3D model of a pump assembly. Below the model is a comparison table for the selected item '21-P-253001A [4-BR]'. The table compares properties between the 'Update from Manufacturer (Current Version)' and the 'Dgn' version. The 'Update from Manufacturer' version shows a 'Detail_Sketch' category, while the 'Dgn' version shows an 'Equip_21-P-253001A_AIEG-CircPump' category. The right-hand panel shows the 'TAG INFORMATION' for the selected item, including details like Model Identifier, Name, Category, Plant Area, Service, System, Unit, Component Name, and various origin and length values.

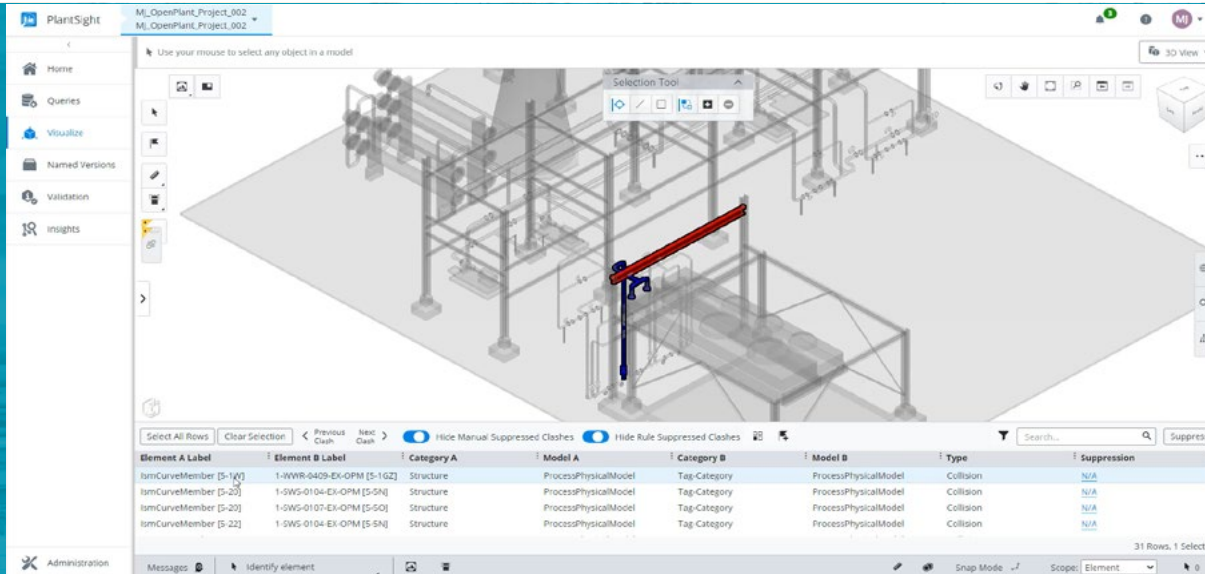
Property	Update from Manufacturer (Current Version)	Dgn
Engineering Status Comments		
Code		
Model	ProcessPhysicalModel	ProcessPhysicalModel
User Label	21-P-253001A	21-P-253001A
Category	CW - Cooling Water	Equip_21-P-253001A_AIEG-CircPump
Detail_Sketch		
Plant		
Plant Area	21	21
Process	CEMPURE	CEMPURE



REASON
4

Clash Detection

Coordinating design activities across teams and team members working remotely is challenging.



- Clashes not found during design arise when construction begins and can be costly.
- PlantSight performs clash detection remotely and collaboratively in the cloud.
- You can increase the accuracy of your design across 3D piping, structures, equipment, and electrical and HVAC systems.
- PlantSight tracks and communicates inconsistencies to designers.

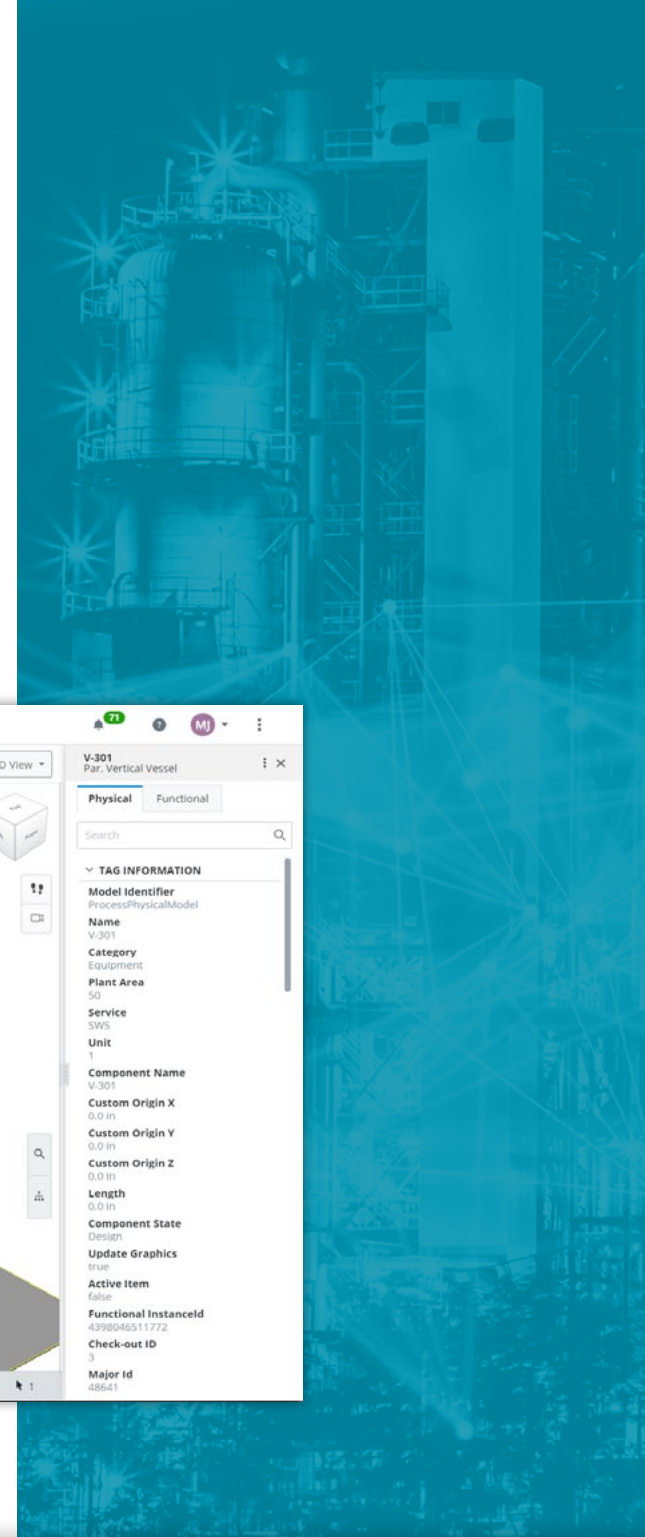
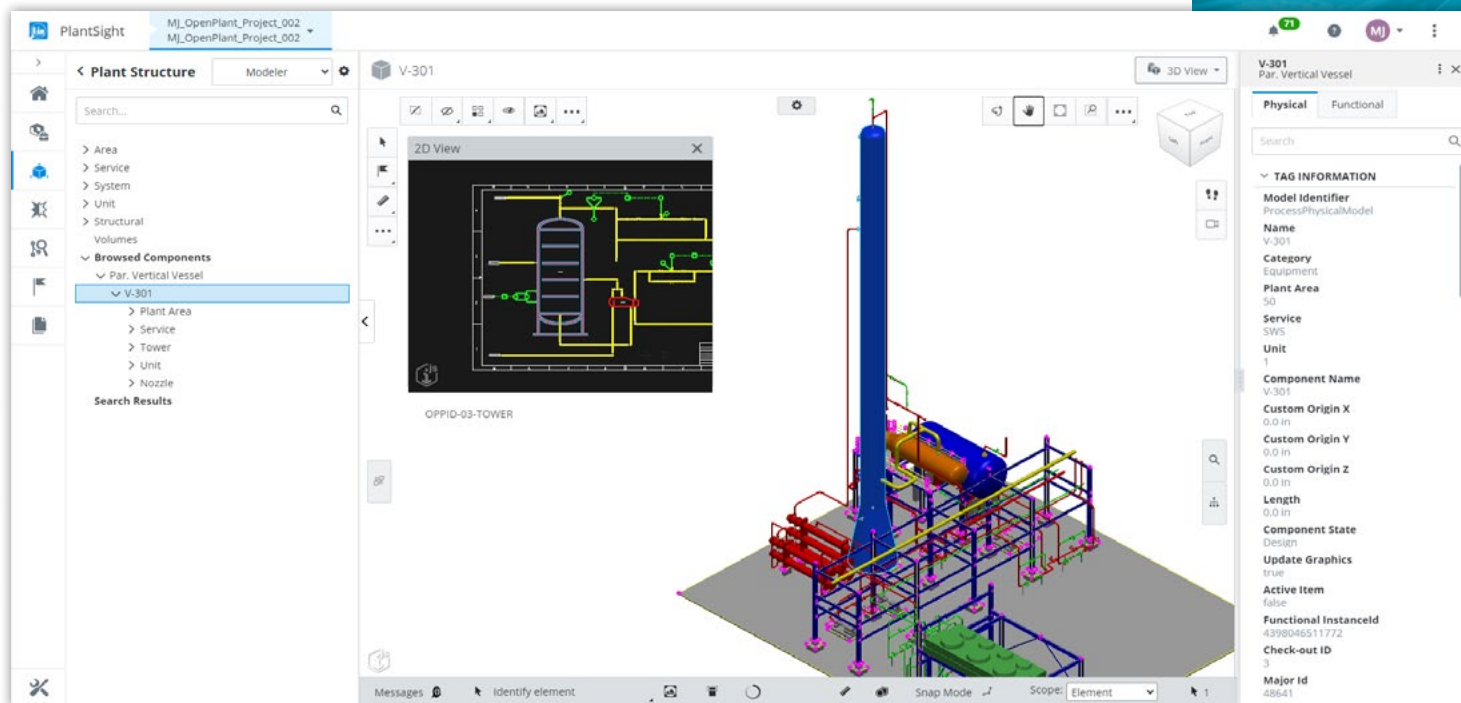


REASON
5

Data Types

Using multiple design tools for different tasks can be time consuming and laborious.

- PlantSight federates data from any 3D design application and P&ID into a single view.
- Bringing together 1D, 2D, and 3D data provides consistency, reveals context, unveils dark data, and generates insights.
- PlantSight allows you to continue working with your preferred design tools and fits into your existing processes.





Why PlantSight?

The Difference is Obvious

	PlantSight	Navisworks
Workflows	Dynamic, real-time, democratized, coordinated design review process with reduced complexity	Requires a technical person to be a keeper of the design review process from a desktop application
Resolving Issues	Resolve issues through flexible and customizable workflows	Maintain your list of issues outside of the design review workflow
Version Control	Maintain a timeline of changes of how, when, and by whom information has been changed	No audit trail of what changes have been made to engineering information
Real-time Information	Perform clash detection in real-time with up-to-date engineering information	Inability to make the best real time decisions
Single Source	Utilize your data , no matter the type in your digital twin	Cannot cross-reference a P&ID from one design application with a 3D model from another application

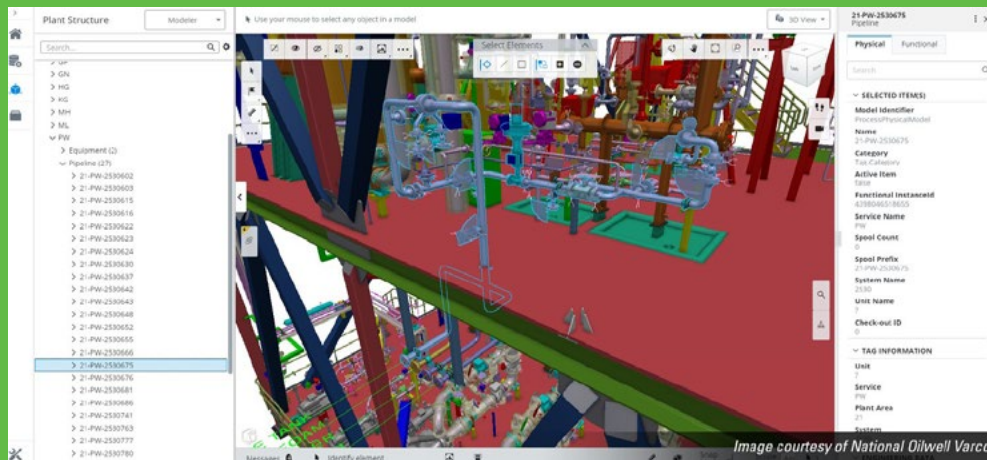
PlantSight: The Digital Twin for the Process Industry

Think Big, Prove Small, Scale Fast with PlantSight.

Contact Us Now >

Visit Us Online >

About Bentley Systems Bentley Systems (Nasdaq: BSY) is the infrastructure engineering software company. We provide innovative software to advance the world's infrastructure – sustaining both the global economy and environment. Our industry-leading software solutions are used by professionals, and organizations of every size, for the design, construction, and operations of roads and bridges, rail and transit, water and wastewater, public works and utilities, buildings and campuses, and industrial facilities. Our offerings include *MicroStation*-based applications for modeling and simulation, *ProjectWise*® for project delivery, *AssetWise*® for asset and network performance, and the *iTwin*® platform for infrastructure digital twins. Bentley Systems employs more than 4,000 colleagues and generates annual revenues of more than \$800 million, in 172 countries. www.bentley.com



Be like NOV Wellstream Processing, who said to ARC Advisory Group that switching to PlantSight was one of their ***“most satisfying achievements.”***